

Belts

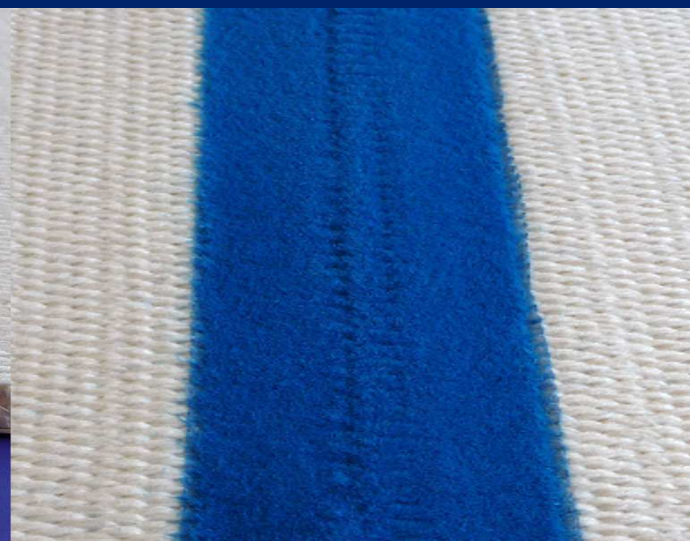
BRICQ-POWER

Traditional woven belt, with high density and high weight per square meter, for a good application and pressure distribution. Its combination of different polyester fibers facilitates moisture absorption. Its woven pattern and its edge treatment with high resistance to temperature and abrasion allow effective lifetime on the machine.



Edge without treatment

J078



Technical Data

Polyester woven belt

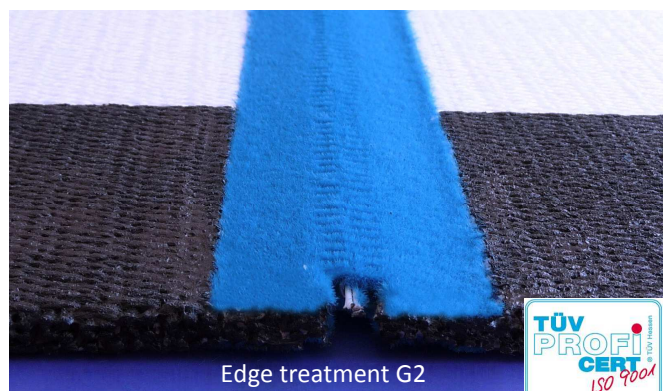
- Weight: 6 800 g/m²
- Thickness: 9 mm
Perfect homogenous thickness
- Permeability: 300 m³/m²/h under 300 mm WG
Hygroscopic absorbent fibers
- Heat setting: High stability
- Guiding control at the end of the manufacturing process :
Provides optimum belt tracking on the machine

Treatment and seam

- Integrated flocked seam :
Eliminates clip marks on the board

Options to improve belt performance

- Diagonal seam:
Reduces roll bounce for less noise, less marking and less maintenance costs.
- Edge treatment:
 - Reduces edge wear in contact with hot plates
 - Prevents glue from sticking on the edges (G/G2)



Edge treatment G2



BRICQ S.A.S.
D 62 Route d'Orgedeuil
16220 Montbron, France
Tel. +33 5 45 23 91 11
Fax +33 5 45 70 86 26

info@bricq.fr